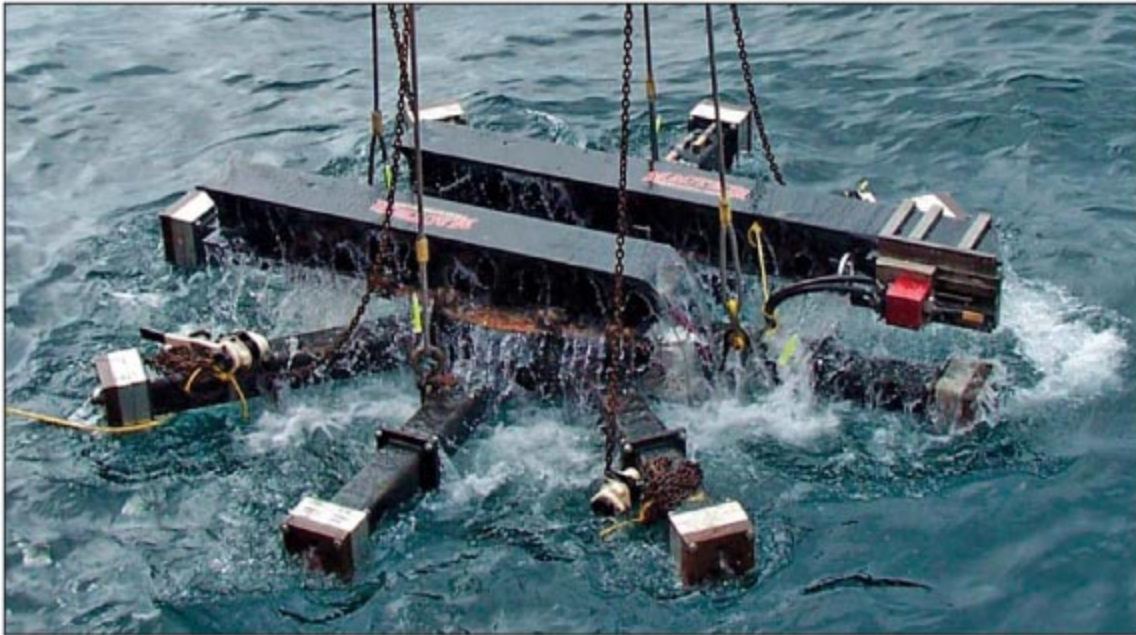


LDFM 5000 FACING MACHINE

MACTECH OFFSHORE PORTABLE MACHINING SOLUTIONS

Offshore and Subsea Caisson and Structure Cutting



LDFM 5000 Large Diameter Facing Machine

Mactech's LDFM 5000 Facing Machine is perfectly suited for offshore and subsea caisson and structure cutting. Adjustable mounting legs secure the machine to the inside diameter of the workpiece and powerful hydraulic motors easily cut through the toughest materials. Features include mechanical feed from multiple ramps and variable speed in radial and axial planes. Optional tool holders, milling heads and motors are available.

Features

- Mechanical feed from multiple ramps
- Variable speed axial and radial feed
- Hydraulic powered or manual axial feed
- Milling and beveling capabilities
- Optional tool blocks and slides available
- Adaptable mounting configurations

LDFM 5000 Capabilities

Inside Mounting Diameter		Cutting Range Diameter		Feed Rate	
Max	Min	Max	Min	Radial	Axial
240 inches	46 inches	17.5 feet	46 inches	0 - .024 inches	0 - .016 inches
6096mm	1168mm	5.3m	1.2m	0 - 0.41mm	0 - 0.41mm

LDFM 5000 FACING MACHINE

MACTECH OFFSHORE PORTABLE MACHINING SOLUTIONS

Specifications

Hydraulic Power Supply Requirements

- Drive: 1-5 gpm, 1500 psi (4-19 lpm, 103 bar)
- Feed: 10-15 gpm, 1500 psi (38-57 lpm, 103 bar)

Operating Weight: 5300 lbs (2404kg)

Shipping Weights and Crate Dimensions:

- Locator Set: 3400 lbs (1542kg); Crate Dimensions: 96 x 48 x 31 inches (2438 x 1219 x 787mm)
- Main Head: 2700 lbs (1225kg); Crate Dimensions: 107 x 46 x 32 inches (2718 x 1168 x 813mm)
- Arms: 1970 lbs (894kg); Crate Dimensions: 184 x 30 x 21 inches (4674 x 762 x 533mm)

